

# FRIENDS ALONG THE *Mullica*

## PROTECTING OUR MULLICA

The Mullica River is a 50.6 mile long river that provides one of the principal drainages of the extensive Pinelands into the Atlantic Ocean. This high-quality estuary is considered a baseline by which other Eastern U.S. coastal areas are measured!

This **FRIENDS ALONG THE MULLICA** project focuses on the towns that are on the Atlantic County side of the Mullica: *Hammonton, Mullica Township, Egg Harbor City, Port Republic, Galloway Township, Absecon, Brigantine and Atlantic City.*

## OUR MISSION:

To promote and advocate for the historical preservation and environmental protection of the Mullica River Watershed.

## *The Challenges Facing These 8 Towns...*

This effort provides educational opportunities regarding the interaction with the Mullica River, its tributaries and associated water features.

These eight towns share some interesting historical features; such as the creation of dams, lakes and settlement patterns which affect our lives directly today.

These eight towns also share challenges from climate change, wetlands losses, stormwater management issues, flooding, invasive plants, wildlife habitat and management, littering, illegal dumping, damage from off-road vehicles, and more.

The Mullica River Watershed is the most pristine conservation zone in the Pinelands landscape region. The watershed supports six state endangered, seven state threatened, and 78 nongame species of conservation concern. The pitch pine-oak forests are home to bald eagles, red-headed woodpeckers, forest-dwelling bats, corn snakes, northern pine snakes, timber rattlesnakes, wood turtles and Pine Barrens treefrogs, cavity-nester birds, forest passerines, raptors, and scrub-shrub open field bird communities. Wetlands and open water along the Mullica River are habitat for foraging ospreys, bald eagles, black skimmers, colonial waterbirds, northern diamondback terrapins and amphibians of many types.

The Mullica River and tributaries are considered the primary drainage system for approximately 568 square miles of the NJ Pinelands. We all need to be stewards of these lands and waters.

The partners and *Friends Along the Mullica* can help each other move toward a more sustainable future.



UPPER MULLICA RIVER, MULLICA TWP.



HAMMONTON LAKE



CLARKS LANDING, EGG HARBOR CITY



MICAJAH SMITH HOUSE  
(THE FRANKIN INN) PORT REPUBLIC



EDWIN B. FORSYTHE NATIONAL  
WILDLIFE REFUGE, GALLOWAY TWP.



ABSECON CREEK



BRIGANTINE COVE



ATLANTIC CITY SKYLINE



## Caring for the Mullica Watershed

Many people are not aware that what they practice in their towns and on their own properties can impact either the protection OR the degradation of local watersheds.

### *POSITIVE IMPACT actions that you can do*

- ◆ Pick up litter and dispose of it properly. Litter can be washed into storm drains and end up in our waterways.
- ◆ Keep surface areas that wash into storm drains free of pet waste, toxic chemicals, fertilizers and motor oil which eventually reach and impair our wetlands and waterways.
- ◆ Use native species when planting trees, shrubs and flowers to preserve ecological balance and to help feed indigenous species insects, birds and mammals.
- ◆ Reduce lawn areas and replace them with native plantings.
- ◆ Reduce the amount of impervious surface in your yard.
- ◆ Plant rain gardens in areas that collect water in your yard. These gardens sequester rainfall for short periods of time and filter impurities before they reach groundwater.
- ◆ Compost vegetable materials instead of disposing of them. Use compost, instead of chemical fertilizers, to enrich your soil.
- ◆ Use phosphate-free laundry and dishwasher detergents. Phosphates encourage algae growth, which can suffocate aquatic life.
- ◆ Use paper and recycled products made from unbleached paper. Bleached paper contains toxic chemicals that can contaminate water.
- ◆ Use non-toxic products for household cleaning as well as lawn and garden care. Chemicals and fertilizers used before rain can wash into waterways.

### *Make a Difference:*

- ◆ Adopt a tributary, water body, or meadow area; and commit to keeping these areas litter-free
  - ◆ Join with local activists to eradicate invasive species plants
  - ◆ Volunteer or donate to local watershed and environmental organizations
  - ◆ Be an advocate for water protection
- 
- ◆ Support policies that promote watershed health, the preservation of natural areas and climate change mitigation
  - ◆ Share your appreciation for the local environment with younger generations

PHOTO: JACK CONNOR

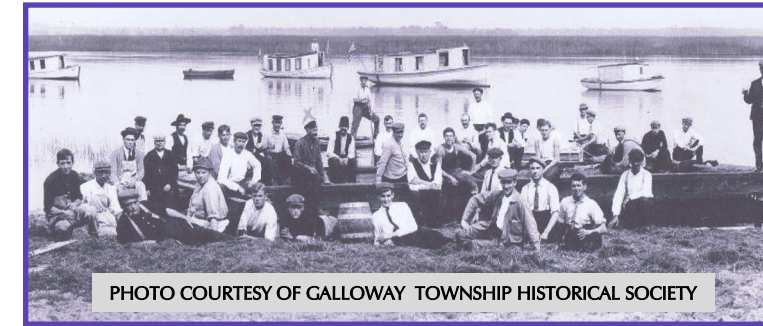
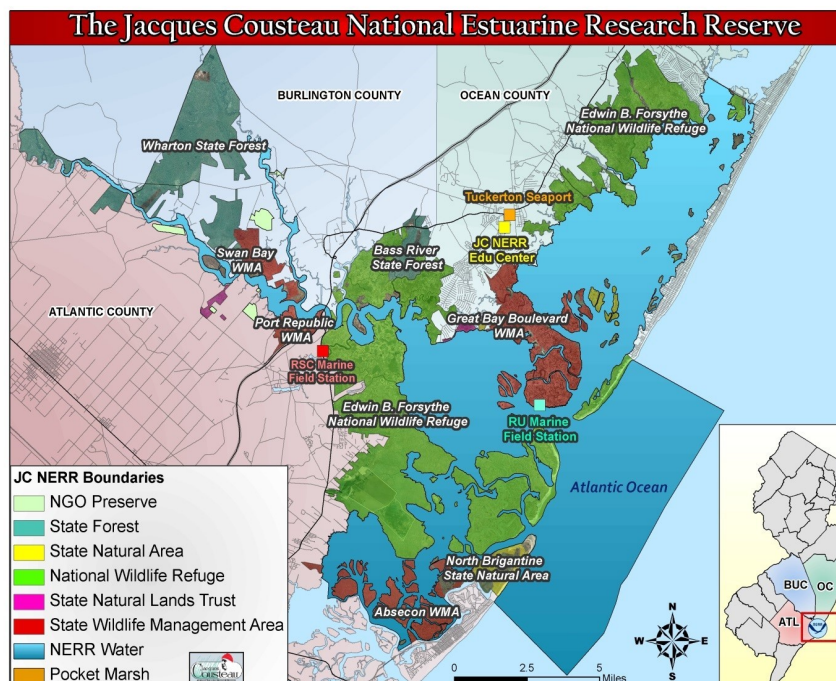


PHOTO COURTESY OF GALLOWAY TOWNSHIP HISTORICAL SOCIETY

### *Friends Along the Mullica Partners*

Association of NJ Environmental Commissions (ANJEC)  
Atlantic County Utilities Authority  
Audubon Society  
Edwin B. Forsythe National Wildlife Refuge  
Jacques Cousteau National Estuarine Research Reserve  
Native Plant Society of NJ Southeast Chapter  
NJ Clean Communities Program  
NJDEP Fish and Wildlife Service  
Pinelands Preservation Alliance  
Rutgers University Marine Field Station  
Stockton University  
Surfrider Foundation South Jersey Chapter  
Sustainable Jersey  
US Fish and Wildlife Service

*This Project Was Funded By*

### THE SUSTAINABLE JERSEY GRANTS PROGRAM



Friends Along the Mullica Logo Design: Rebecca Stewart  
Brochure Design: Barbara Fiedler

FOR MORE INFORMATION ABOUT THIS PROJECT CONTACT

**GO GREEN GALLOWAY**

[gogreengalloway12@gmail.com](mailto:gogreengalloway12@gmail.com)

THE FILM: "FRIENDS ALONG THE MULLICA"

IS AVAILABLE TO VIEW HERE:

<https://gogreengalloway.org>